

The first thing you want from a short break is a quality experience at a reasonable price. And if it's quality accommodation you're looking for alongside superb landscapes, historic houses, outdoor activities or just a relaxing weekend, just two hours from almost anywhere, you don't need to look much further than the East Midlands.

And where better to stay this spring than the East Midlands finest. The accommodation featured here are the 2005/06 Enjoy England Excellence Gold Award winners for the East Midlands. That means they've proved themselves to be amongst the very best in the country.

Something they're very proud of... and so are we.

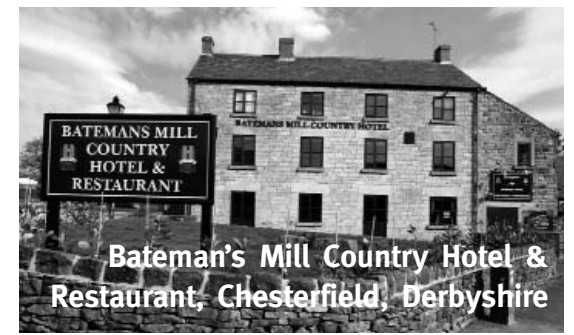
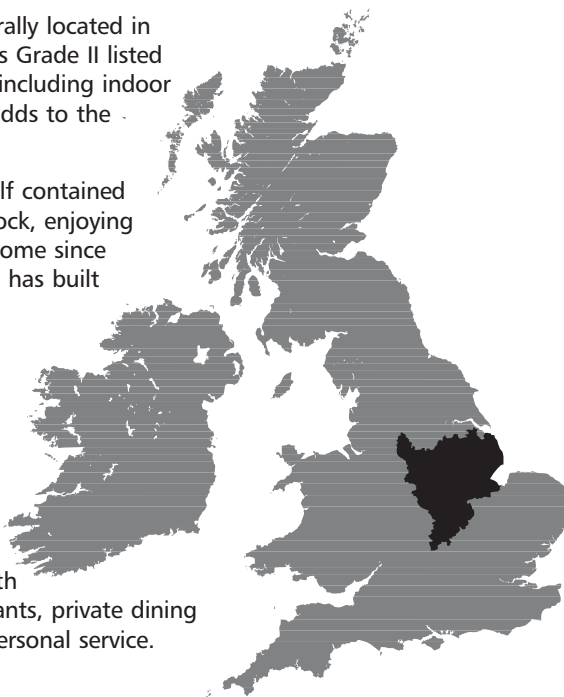
Kilworth House Hotel an enchanting blend of Victorian opulence, fine food and contemporary luxury. This Grade II listed, former family home is set amid thirty-eight acres of Leicestershire parkland.

Marriott Breadsall Priory Hotel & Country Club is centrally located in attractive countryside, a few miles from the Peak District. This Grade II listed Priory originally founded in 1260, offers full leisure facilities, including indoor pool and golf. The restaurant housed in the old wine cellar adds to the timelessness of the surroundings.

Hawthorn Cottage a delightfully authentic 400 year old self contained farm cottage tucked away in a picturesque corner near Matlock, enjoying spectacular panoramic views over the White Peak. A family home since 1974, lovingly restored and extended, this bed and breakfast has built up a large following of regular guests.

Blakelow Farm Holiday Cottages are the tastefully converted barns of the 200 year old Blakelow Farm. Set in eight acres of paddocks and gardens and providing luxury, self catering accommodation, with views over the beautiful, open countryside towards Chatsworth House.

Bateman's Mill Country Hotel & Restaurant is a delightfully converted 18th century mill house situated on the edge of the Peak District, close to Chatsworth Estate. With ample parking, eight superb ensuite rooms, bar, two restaurants, private dining and conference facilities, the mill offers a very high quality personal service.



east midlands **tourism**

east midlands **tourism** 2005/06
enjoy england
excellence
awards

Visit our website for more information

www.eastmidlandsfine.com

